

BELONGING, BEING & BECOMING

Breakfast Forums for Leaders & Directors

The Gowrie Training Centre (Professional Support Coordinator SA) has planned a number of **breakfast forums** to support leaders and directors become more familiar with the Early Years Learning Framework (EYLF) document and explore what it means for educators, staff teams and services.

The breakfast forums are currently scheduled for central Adelaide with a full range of familiarisation sessions to be available across South Australia from early 2010. The dates for upcoming sessions are listed below with new dates regularly being added to our website www.pscsa.org.au.

Breakfast forums are \$22.00 per person and include a continental breakfast. All sessions are from 8.00am - 9.30am and held at the Gowrie Training Centre, 43 Dew Street Thebarton SA. When you register please identify which session you want to attend and if you have any special dietary requirements.



Tuesday 19 January 2010



Monday 1 February 2010

Thursday 18 February 2010

Book online at www.pscsa.org.au but register early as places are strictly limited. For more information contact the Gowrie Training Centre on 8234 5219 or email enquiries@pscsa.org.au

Please note **free familiarisation sessions** are currently being planned for delivery in your local area from early 2010. These will be organised regionally and be presented by facilitators from the Gowrie, DECS, Family Day Care and ARMSU as a collaborative project. Check our website regularly for more details

GOWRIE

ADELAIDE

Innovation in Children's Services



An Introduction to the Early Years Learning Framework (EYLF) - Staff Meeting Sessions

The Gowrie Training Centre (Professional Support Coordinator SA) has facilitators available to come to your staff meeting or network group to support staff in becoming more familiar with the Belonging, Being and Becoming **Early Years Learning Framework** (EYLF) and to explore what it means for staff and services. These sessions are \$150.00 for a 1 - 1.5 hour on-site presentation including a facilitated discussion.

You can book one of these sessions for your service now for sessions to be held from 30 November 2009 and into 2010. The number of sessions available for on-site delivery are limited.

For more information on these sessions or to book one for your service, contact Sharee Borlace at

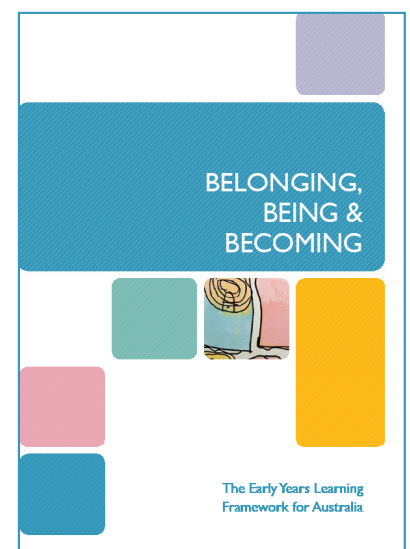
The Gowrie Training Centre

Phone 1800 129 606

Email enquiries@pscscsa.org.au

If you don't already have a copy of the Early Years Learning Framework (EYLF) you can download a copy from Australian Government Department of Education, Employment and Workplace Relations website www.deewr.gov.au

For details of upcoming free familiarisation sessions presented by the Gowrie, DECS, Family Day Care and ARMSU available from early 2010 and other training and support options go to our website www.pscscsa.org.au



GOWRIE

ADELAIDE

Innovation in Children's Services

Please note **free familiarisation sessions** are currently being planned for delivery in your local area from early 2010. These will be organised regionally and be presented by facilitators from the Gowrie, DECS, Family Day Care and ARMSU as a collaborative project. Check our website regularly for more details